



EDCO CHEM

INDUSTRIAL CHEMISTRY

www.edcochem.com

Na

H₂O

SO₂

Our company, EDCO KİMYA TEMİZLİK MADDELERİ MADENCİLİK GIDA SAN. VE TİC. LTD.ŞTİ. was established in İzmir in 2018 as "Industrial Chemicals Solution Partner."

By producing industrial maintenance chemicals and cleaning products under the EDCO CHEM brand, which reflects its experience in the sector, it has provided fast and assertive solutions in many industries and workshops and has shown that it fulfills its cooperation responsibility.

EDCO CHEM, aiming to protect the state-of-the-art production facility and environmental sustainability, takes care to ensure that all production stages and products are in an environment-friendly system.

EDCO CHEM family is designed with quality approval and registration certificates, solutions that are needed in production facilities, processes and various points of businesses and product groups that are sensitive to ecological and human health, which are accepted in the country and abroad.

EDCO CHEM, which has the most extensive service network in Turkey, is proud and happy to develop and grow together with its professional sales team, active marketing network, high capacity production lines and valuable solution partners.

As the EDCO CHEM family, we always keep on dreaming and produce plans and projects to make these dreams come true, and we work hard.

INGREDIENTS

1) TECHNICAL GROUP	
• OIL REMOVER.....	4-5
• SPECIAL CHEMICALS.....	6-8
• ASIDIC SOLVENTS.....	9-10
• PREVENTION and PROTECTION LIQUIDS.....	11-13
2) TEXTILE GROUP.....	14
3) GENERAL CLEANING AND HYGIENE GROUP.....	15-21
4) OTHER PRODUCT GROUPS	
• AUTO CARE PRODUCT.....	22
• MARINE GROUP.....	22



TECHNICAL GROUP OIL REMOVER

YS-OC-300 CONCENTRATED WATER BASED EXTRA OIL REMOVER CHEMICAL

Foamy degreaser for pressure washers. It is used by diluting with hot or cold water. It is biodegradable. It is a 100% safe product, not flammable. It is economical because it is highly concentrated.

INSTRUCTIONS FOR USE: It is suitable for washing all kinds of greasy and dirty parts. Heavily soiled floors and tanks can be washed with pressure washers. It can be used on all kinds of floors in floor cleaning machines, especially on epoxy floors. YS-OC-300 is used hot or cold by spraying, brushing, dipping method. Hot application provides better results. 1/10 is used in washing parts. It is non-combustible and environmentally friendly. It does not require special precautions as waste during storage and use. It is a special product preferred by all sectors.

YS-OC-500 CONCENTRATED EXTRA STRONG OIL AND CARBON REMOVER

It is a special food grade cleaner used for cleaning ovens, oven pans, burnt oil, soot residues and chimneys. Does not contain flammable solvents. Penetrates down to the thinnest points with its foaming and sticking properties on vertical surfaces. It provides safety and prevents fire as it does not leave oil residue in furnaces and boilers. Eliminates bad odors. It provides cleaning without abrasion on all kinds of metal and plastic surfaces. Because of its strong solvent feature, it does not require rubbing. It is versatile. It is used in facade cleaning in the construction industry. It is economical because it is highly concentrated.

INSTRUCTIONS FOR USE: It is used by brush spraying or dipping method. It is diluted 1/5 to 1/50 depending on the density of the pollution. After it is applied to the surface, it should be rinsed with water. It can be applied on hot surfaces or diluted with hot water. Do not use on aluminum, zinc, tin, anodized aluminum, galvanized surfaces.

YS-OC-700 CONCENTRATED OIL REMOVER, FLOOR CLEANER AUTOMAT CHEMICAL

It is an oil remover with adjustable foam for compressed and floor washing machines. It is biodegradable. It is a 100% safe product, not flammable. It is economical because it is highly concentrated. It is very effective in cleaning tire marks on the epoxy floor..

INSTRUCTIONS FOR USE: It is suitable for washing all kinds of greasy and dirty parts in parts washing machines. Heavily soiled floors and tanks can be washed with pressure washers. It can be used on all kinds of floors with floor cleaning machines. It can be used hot or cold by spraying, brushing or dipping, but hot application provides better results. It is used at the rate of 1/40 in vending machines. It is non-combustible and environmentally friendly. It does not require special precautions as waste during storage and use. It is recommended to use with protective gloves as it will absorb the natural oil of the skin..



OIL REMOVER

YS-OC-800 OIL REMOVER FOR CONCENTRATED ULTRASONIC MACHINE

It is designed for automatic parts washing machines.
It is biodegradable.
It is a 100% safe product, not flammable.
It is economical because it is highly concentrated.



INSTRUCTIONS FOR USE: It is suitable for washing all kinds of greasy and dirty parts in parts washing machines. It is used by diluting with hot or cold water. For ultrasonic machines, 1-5% (according to the density of the dirt) is recommended. It is non-combustible and environmentally friendly. It does not require special precautions as waste during storage and use. It is recommended to use with protective gloves as it will absorb the natural oil of the skin..

YS-OC-100 CONCENTRATED WATER BASED OIL REMOVER

It is used in kitchen floors and cabinets. It is a powerful degreaser. It safely cleans heavy oil and dirt from metal, concrete, plastic surfaces and does not harm them. Phosphate free, biodegradable, environmentally friendly. It is not flammable. Since it does not contain substances harmful to the environment and nature, it can be used safely in food processing, cooking units, slaughterhouses, schools and all kinds of industrial sectors.

INSTRUCTIONS FOR USE: It can be applied by dipping, spraying, brushing or wiping. It is diluted with water at a ratio of 1/8 to 1/20 according to the density of the dirt. It may require rinsing if you use it as a concentrate or diluted with very little water..



YS-OC-900 CONCENTRATED WASTE CONTAINER CLEANER AND ODOR REMOVER

It is a fragrant oil and dirt solvent that cleans all kinds of washable surfaces. It is used instead of petroleum-based solvents and for general cleaning purposes. It is a multi-purpose product. It provides safe cleaning without leaving any stains on all surfaces cleaned with water. It is a neutral cleaner; It does not contain acid, ammonia, free alkali. It is nature friendly; biodegradable. It does not contain chlorinated solvent, phenol, phosphate, caustic. It does not abrade the surface, does not leave residue and water stains. It can be used safely on surfaces such as fabric carpets. Does not create matting.
It can be used safely in washing machines. It is economical because it is highly concentrated.

INSTRUCTIONS FOR USE: It is used by diluting with water at a ratio of 1/60.



FX-CKT-13 CONCENTRATED WASTE CONTAINER CLEANER

It is a phosphate-based product with high foam quality, alkaline, active chlorine and used for cleaning equipment and floors. By the complexing agents in its formulation, it is not affected by water hardness. By the active chlorine, it is effective on microorganisms that may occur in the food industry and need to be removed. More than 80% degradable in nature.

INSTRUCTIONS FOR USE: It is used by diluting at a ratio of 1/50.

SPECIAL CHEMICALS

SPECIAL CHEMICALS PRONEX

PRONEX industry anti-adhesive, lubricant and lubricant
It is a water-based emulsion product.

Since it is water-based;

- ✓ Used on all surfaces.
- ✓ Odorless.
- ✓ It is not flammable or combustible.
- ✓ It is not harmful to the environment and health.
- ✓ It is economical.
- ✓ Suitable for all cable types.
- ✓ Used directly.



GUARDOIL PRONEX Cable Slider





SPECIAL CHEMICALS



EPC-380 ELECTRIC PANEL CLEANER

Chemically cleans dirt, oil, grease and moisture from electric motors and components. It removes deposits that can arc without danger of fire. With its fast drying feature, it creates a clean surface without leaving any residue. It is insulator up to 30,000 volts. It can be used safely in electrical components. It does not have a corrosive effect on metals. EPC-380 Usage Advantages; It removes the risk of arcing as it ensures that the deposits on the electric motor and its components are completely cleaned. Since it has no abrasive effect on metal surfaces, it provides complete cleaning of sensitive surfaces safely. It saves time and labor with its fast cleaning feature. Makes it possible to clean small engines without disassembly.

INSTRUCTIONS FOR USE: If there is coarse and loose dirt on the surface, compressed air can be blown before applying to the surface. It is sprayed until the surface is completely clean. After cleaning, you can air dry it. By immersion method; Immerse small electric motors or parts to be cleaned into the EPC-380 in the tank. You can air dry after removing. It should be used directly. It should never be diluted with water. EPC-380 Usage areas other than electrical components; Purification of sensitive metals and casting parts from pollution such as oil and burrs, cleaning from paraffin in the food industry, cleaning of dried oil in chains, cleaning of bearing parts and casing of devices, cleaning of drum brakes.

EPC-PRO PROTECTIVE FOR SENSITIVE AND ELECTRICAL COMPONENTS

It is a product developed to protect electrical devices against humidity and pollution. It prevents electrical faults in environments with high humidity. Although it functions as an isolation against pollution, it does not prevent the electrical transmission of the equipment it is used in. Covers the surface by removing moisture. Improves electrical properties. Increases insulation resistance. It prevents rusting and abrasion. It can adhere to any surface in the form of a micron film and provides full protection by penetrating to the finest points. Makes devices that have been exposed to water or damaged by moisture reusable.



INSTRUCTIONS FOR USE: After cleaning the electric motor and devices with EPC-380, EPC-PRO should be applied. You can use EPC-PRO by spraying or dipping method. After EPC-PRO is applied, it should be dried with the help of air or left to dry on its own. After cleaning with EPC-380 on submerged devices, EPC-PRO should be sprayed until the water is completely removed..

SPECIAL CHEMICALS

GOLD CLEANING ULTRASONIC GOLD WASHING SHAMPOO

Used in ali metals Polish used for cleaning Polishing residues and oils.

Areas Of Use:

- Jewelry Industry
- Cleaning Of Brass And Yellow Materials
- Cleaning Of Oxidized Brass Parts
- Clock Industry
- Clock Strar Case
- Optical Industry
- Spectacle Frame Production
- Automotive Industry
- Cleaning Of Diesel Injectors
- Electroplating Process

USAGE OF:

- 5 liters of water 100 g
- 10 liters of water 200 g
- 20 liters of water 400 g
- 50 liters of water 1kg

Ultrasonic machine is supplied with water. Water after heating 60°C
First the device is operated for 2-3 minutes without shampoo and
then the device is running required amount of GOLD CLEANING is
added, and process observed.





ASIDIC SOLVENTS

ESJ-ORGANIC CONCENTRATED HEAT EXCHANGER, SILICA AND SYSTEM CLEANER

It contains specially formulated system cleaning chemicals that can be used safely in all known heating-cooling systems, and that ensures efficient and economical operation by removing lime, mud and other impurities from the system. It is a deposit cleaner of stainless plate or serpentine heat exchanger, vicious-corrosion products. With the inhibitors and surfactants in its structure, it ensures that the material is cleaned safely and that the seals in the heat exchanger, if any, are never damaged. It is used as a safe and fast cleaner.

INSTRUCTIONS FOR USE: Cleaning is done by circulation, spraying or dipping. It is used by diluting between 1/5 and 1/30 depending on the pollution conditions. The circulation system gives 1/10 ideal results in cleaning. Rinsing must be done after cleaning.

CS-304 CONCENTRATED CHROME CLEANER POLISH

It is especially used for cleaning stainless surfaces in textile machinery and food facilities.

INSTRUCTIONS FOR USE: It is used by diluting between 1/3 and 1/10 with water. It provides a more effective cleaning on hot surfaces.



VYL-45 CONCENTRATED COMPOSITE MOLD CLEANING CHEMICAL

It is used in egg companies for egg tray cleaning. It is formulated to be used in the cleaning of aluminum composite surfaces and ventilation pipes in showrooms and factories. It effectively cleans and polishes aluminum surfaces in one step. It does not contain hydrofluoric acid. It clings to vertical surfaces and acts quickly. Removes light rust layer. It acts quickly and thus prevents things from stopping for a long time.

INSTRUCTIONS FOR USE: It is used by diluting with water between 1/5 and 1/20. All kinds of painted and unpainted aluminum, exterior coatings, roofs, radiators, factory ventilation and air conditioning pipes, buildings, stairs, aluminum trailers and air conditioners are the application areas.

HSC-200 CONCENTRATED LIME AND SILICA CLEANER

It is an acid type cleaner especially developed for cleaning mortar, lime and concrete residues formed at the end of construction. It is both a cleaner and a sediment remover. It is effective when other cleaners fail. It is used to remove mortar and cement residues from cement silos and concrete mixer trucks. It is ideal for removing mortar and residues from steel scaffolding, and cleaning very dirty concrete surfaces. It is used to remove plaster and mortar from ceramics, tiles and glass. Removes white blooms from chimneys, floor tiles and decorative bricks. It removes moss and other organic deposits on the roofs.

INSTRUCTIONS FOR USE: 6 Directions for Use: Dilute 1/5 to 1/20 with water. Apply to the surface with a brush, cloth or sprayer. Wait 5-10 minutes. And rinse with plenty of water.

PRE-PAINT METAL SURFACE PREPARER BEFORE PAINT

It was developed for best preparation of the metal and aluminum surfaces to be painted and coated with any preservative. It removes oil and rust with a single wiping operation and opens micron-level pores on the surface. It creates a thin phosphate layer on metal surfaces. It increases the coverage of the paint by providing better adhesion. It does not require sanding on aluminum and other shiny surfaces. It is non-flammable, safe and does not cause discomfort to the user. It does not require heating when used with the wiping method. It is economical because it is highly concentrated. It extends the strength of the paint, prevents rusting and paint damage especially at the welding points. It is wide-ranging; Recommended on iron, steel, aluminum, bronze, copper, brass.

INSTRUCTIONS FOR USE: By wiping method; According to the condition of the oil, it is diluted with 1/10 to 1/15 usage ratio and the surface is wiped with the help of a brush or cloth. You can optionally rinse the cleaned surface. With the immersion method; You can heat it up to 70 degrees by diluting between 1/5 and 1/10. After immersing the parts to be cleaned and waiting for 5-10 minutes, the removed parts should be rinsed in water at the same temperature.



OLV-500 CONCENTRATED ACIDIC STAINLESS STEEL CLEANER

It is a product developed especially for difficult cleaning processes of steel and steel alloys.

It is a mixture of acids. Corrosive effect on metals is minimized by selection of acids and the corrosion inhibitors it contains. It removes corrosion deposits and grinding formed by minerals, easily removes rust layers and heavy dirt. Fixes weld blemishes..

INSTRUCTIONS FOR USE: Dilute 1/5 and apply to the surface. After waiting for 2-3 minutes, it should be rinsed with plenty of water. If necessary, a rubber brush can be used.



APT-300 CONCENTRATED ALUMINUM RADIATOR CLEANER AND POLISHER

Apt-300 is a strong and versatile acid formula product. Thanks to its strong formula, it cleans aluminum radiator and strainers from oil, soot, dust and all kinds of dirt and residues. It ensures that the air conditioning and air systems operate at full capacity and have a longer life. It penetrates into the filters and cleans them by dissolving blackening, dirt, oil and other residues.

INSTRUCTIONS FOR USE: Dilute 1/5 to 1/10 with water in a plastic spray. Turn off the A/C fan and spray from top to bottom. Wait a few minutes for dirt and residue to penetrate and then rinse.



EPOC-300 EPOXY AND ADHESIVE CLEANER

It is a highly effective, non-flammable special solvent in all places where oil and tar are a problem. It is generally used to remove oil from the surface during metal surface preparation before painting. It absorbs the oil on the metal and removes it by flying from the surface in a very short time.

INSTRUCTIONS FOR USE: It is used directly in removing oil from the metal surface, cleaning the lining residues in the automotive sector, cleaning the tarry oils on the engines and epoxy floor cleaning.



PREVENTION and PROTECTION LIQUIDS

NF-600 INDUSTRY TYPE NON FLAMMABLE INDUSTRIAL SOLVENT

It is preferred in businesses especially as it is not flammable instead of thinner. Although it is a very strong oil remover with solvent component, it does not contain any flammable substances. It destroys the structure of the oil layers on the applied surface and absorbs it. It leaves no residue or residue. Saturation rate is much higher than flammable and combustible materials such as gasoline, diesel, thinner, etc. It is used directly in dipping, spraying, wiping and closed circuit systems. It does not have a corrosive effect on metals, does not rust and does not wear. It does not risk human health, does not harm nature, is biodegradable. causes rust and wear.

THINGS TO PAY ATTENTION: Do not breathe indoors. In case of contact with eyes and skin, rinse with plenty of water. Do not mix with unfamiliar chemicals. Keep away from direct sunlight. Store at room temperature. Dispose of packaging and waste according to local regulations. Use the necessary protective materials (glasses, gloves, apron).

KRY-100 PROTECTIVE OIL AGAINST RUST AND CORROSION

It is a very strong product against corrosion in overseas shipments. It is used to protect all iron and steel parts that will not be painted against corrosion. After application to the surface, a translucent greenish-brown film layer remains on the surface. This film does not absorb water and moisture. The film layer does not dry completely, but is not runny. The film layer protects the surface against rust. Under ideal conditions, the protection period is 3 years.

Bolts, nuts, discs, rods, iron and steel scaffolding, concrete mixers, all iron and steel parts encountered with acid vapor in the chemical industry, marine equipment and hardware, sea water tanks, brine tanks, pipes, steel coils, steel plates have long-term protection against corrosion. It can be used safely in precision instruments, precision machined surfaces, firearms, battery cables, ignition systems, locks, antennas.



INSTRUCTIONS FOR USE: It is applied by brush or spraying without the need to clean metal surfaces. Even if there is a thick rust layer on the metal surface, it is applied directly on the rusty layer. After a while, the product penetrates into the rust and reacts with the rust. A clean metal surface is obtained when the layer is removed. The product is applied using directly.

PREVENTION PROTECTION LIQUIDS RST-400 RUST REMOVER, LOOSENGER, LUBRICANT AND PROTECTIVE

It makes the connected elements such as stuck, rusted bolts and nuts reusable. With its lubricating feature, it puts an end to jamming and noises in hinges and locks. Prevents and dissolves rust. It dissolves heavy oil and dirt layers and cleans them. It can be used safely on all kinds of metal surfaces. It is fast effective. It is economical since its lubricant feature is long-lasting. Since it is not abrasive and leaves a protective oil layer, it prevents re-rusting after cleaning the rust. Water and moisture proof. It does not become brittle or crack in heat or cold.

INSTRUCTIONS FOR USE: It is applied by spraying on the surface to loosen the stuck bolts and nuts. It acts in a few minutes with its penetrating feature. For cleaning rusty surfaces, it should be wiped with an abrasive cloth or brush after spraying.



MC-LO CONCENTRATED PIT, OIL AND CARBON CLEANER

It is an economical product that is preferred especially instead of diesel in companies. By its special formula, it thickens and thickens when combined with water, and can dissolve stubborn dirt such as oil, fuel, tar even by clinging to vertical surfaces. While cleaning heavy oil and dirt, it does not damage the surface and paint. It is especially used for cleaning ropes and chains covered with heavy oil and dirt. It does not emit steam like other solvent-containing solvents and does not cause discomfort to the user. It does not contain chlorinated solvent, acid, alkali. It is biodegradable and nature friendly. It has a pleasant smell and is used in the food industry. When diluted with water, it creates a non-flammable structure.

INSTRUCTIONS FOR USE: For best results, it should be mixed with water at a ratio of 1/5. This mixture should be shaken until it has a dense consistency. Apply to the surface with the help of a sprayer or cloth and brush. Wait for 10-15 minutes and remove oil and dirt from the surface with pressurized water. Attention: Since it is a concentrated product, make sure that it will not harm your surface coatings such as paint, wax, varnish by trying it beforehand.

PAINT REMOVER LIQUID

It dissolves 99% of the paints used not only on metal surfaces but also on wood and exterior surfaces in the market. Besides being economical, it is also easy to use.

INSTRUCTIONS FOR USE: It is applied to the surface to be applied with a brush or roller and the reaction time is waited (the paint is removed from the surface). After the reaction time is over, it is rinsed with water. It can also be used by immersion method.

Protect the cleaned metal surfaces against corrosion, otherwise it will corrode. Attention: Use gloves and goggles during application. In case of contact with skin, wash with plenty of water. The unused portion of the product should be kept in its package. Wash the brush or roller you use with water after the process is finished.



KA-600 MOLD PROTECTOR

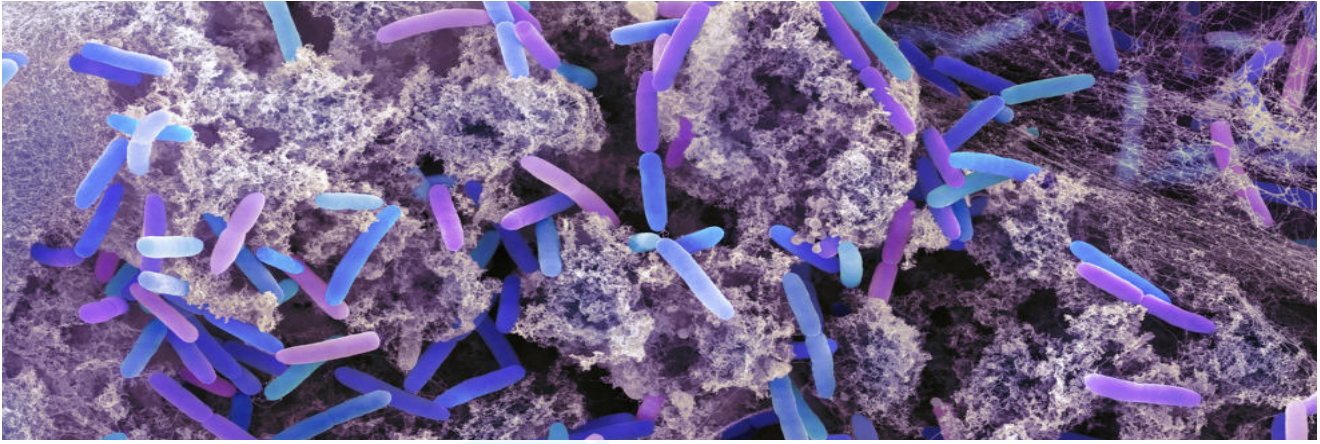
It is produced for the protection of metal and plastic injection molds. It prevents rust, corrosion and tingling formation on the mold for a long time. It dries fast. It makes permanent lubrication by penetrating the metal quickly. Lubricates all metal parts.

INSTRUCTIONS FOR USE: After cleaning the molds, it is sprayed on the surfaces and removed for later use. It is recommended to store the molds that will not be used for a long time by wrapping them with greaseproof paper. In the next use of the molds, the surfaces are wiped and used after cleaning. After application, the product spreads perfectly on the metal surface. After the solvents in its structure evaporate on its own; it covers the surface with a flexible, water-repellent, non-brittle film. This layer prevents corrosive effects such as air, moisture and water from reaching the metal surface.



KA100 MOLD RELEASE

It is an excellent and very economical product specially developed to be used as a mold release agent, anti-adhesive and lubricant. It is used as a release agent in plastic molding, anti-adhesion in paper and cardboard, and as a lubricant in lubricating pasta and moving evenings of machines in the textile and food industry. It is also used in the production of synthetic fiber and yarn, in cleaning the nozzles, in textile machines as a barrier to burning the deposits on the plates and needles.



YS-OC-1100 CONCENTRATED LIME, SILICA, ALGAE, BACTERIAL PREVENTIVE

It is an auxiliary chemical that is dosed before the water that has passed the pre-filters enters the reverse osmosis membranes. It is a product used to prevent membranes from being affected by calcareous, ferrous or salty waters and to prevent clogging. It is used to provide effective water purification in antiscalant reverse osmosis systems. Calcium, magnesium and bicarbonate ions react delays the deposition on the membrane surface.



INSTRUCTIONS FOR USE: It is used by diluting at a rate of 1/1000.

COS-840 WATER-BASED CHROME WELD BRAKER

It is a unique product that prevents hot burrs formed during welding processes from adhering to the surface. It provides excellent protection on stainless steel, carbon steel, galvanized and all other metal surfaces. By its environmentally friendly feature, it does not contain any chemicals that harm the ozone layer. It does not have any inhibitory effect on painting processes or coating processes after welding processes. It is a water-based product. It has no flammability feature. When applied to the area to be welded, it prevents the burrs from sticking and the burrs are removed from the surface with a simple brush..



COS - 800 CONCENTRATED WELD BURNERS

It is a unique product that prevents hot burrs formed during welding processes from adhering to the surface. It provides excellent protection on all other metal surfaces. Thanks to its environmentally friendly feature, it does not contain any chemicals that damage the ozone layer.

It does not have any inhibitory effect on painting processes or coating processes after welding processes. It is a water-based product. It has no flammability feature.

INSTRUCTIONS FOR USE: When applied to the area to be welded, it prevents the burrs from sticking and the burrs are removed from the surface with a simple brush. It is used with a mixture of 1/3 to 1/6.



POL-CL POLYURETHANE CLEANER

It is used for cleaning the isocyanate-polyol sourced impurities and removing the cured polyurethane layers from the floor, machine equipment and molds. Although it consists of solvent-based components, it is definitely not flammable or combustible. It gives effective results even in small amounts. It prevents unnecessary product consumption and loss of time.

INSTRUCTIONS FOR USE:It is used directly in the removal of polyurethane and its derivatives.



TEXTILE GROUP

EC-FGR ODORLESS STAIN REMOVER

It removes grass stains, oil, grease and most food stains, leaving no more. It can be used safely on wool, cotton, silk, corduroy, synthetic fabric, nylon, orlon and other synthetic materials. Do not use on plastic or leather. Take care that the product does not touch the varnished surfaces.

INSTRUCTIONS FOR USE: Keeping the spray 20 cm away from the stain, spray it on the stain that needs to be cleaned and wait. Then clean with compressed steam or air. If necessary, repeat the process one more time. Drinks or food stains containing sugar may need to be cleaned with a wet sponge after treatment with EC-FGR.

LC-240 TEXTILE SPECIAL STAIN REMOVAL

It is used in cleaning the dirt and oil stains on raw and dyed fabrics in the textile and paint industry. It is used to remove oil, dirt and other stains on synthetic and semi-synthetic fabrics such as denim and gabardine, 100% Co or mixed raw and dyed, polyester, viscose, poplin, brode and tulle. It is not flammable, leaves no residue.

L320 / LC-340 TEXTILE SPECIAL STAIN REMOVAL

It is used in cleaning the dirt and oil stains on raw and dyed fabrics in the textile and paint industry. It is used to remove oil, dirt and other stains on synthetic and semi-synthetic fabrics such as denim and gabardine, 100% Co or mixed raw and dyed, polyester, viscose, poplin, brode and tulle.

It is not flammable, leaves no residue.

MRS-1664 MULTI-PURPOSE PRINTING PAINT REMOVER

It is used in film druck printing machines. It is a strong oil and paint solvent. It safely cleans heavy oil and dirt from surfaces such as metal, concrete, plastic, vinyl. It is 100% safe, non-flammable. It does not contain harmful substances to nature. It is used safely in food businesses and all kinds of industrial sectors.

INSTRUCTIONS FOR USE: It is applied by dipping, spraying, brushing or wiping. It is used by diluting with water at a ratio of 1/1 to 1/20 according to the density of the dirt. It may require rinsing if you use it directly or with little water.

RUST CLEAN TEXTILE RUST REMOVER

It is effective in removing rust stains on textiles and all kinds of soft surfaces, by the rust removing active ingredients it contains.

INSTRUCTIONS FOR USE: It is applied directly. After waiting for 1-2 minutes, it is rinsed.



CN-02 CARPET SHAMPOO IN CONCENTRATED MACHINE

It does not leave any residue, does not bleach the textile, its foam is controlled and it is effective in stains. It is used for cleaning textiles in all kinds of carpets, armchairs, upholstery fabrics, etc. except for hand-woven carpets. Does not leave residue on textile. Residues that may occur in the form of fine dust due to frequent use can be easily cleaned with a vacuum cleaner.

INSTRUCTIONS FOR USE: It is recommended to use 20-50 ml/lit hot or warm water in the water tank of the carpet washing machine. A small amount of CN-02 is applied directly on difficult stains for 20 minutes beforehand.

GENERAL CLEANING AND HYGIENE GROUP

FX-QAC-36 QAC BASED ENVIRONMENTAL HYGIENE PRODUCT

It is a multi-purpose liquid cationic disinfectant with a wide range of microorganism killing used after cleaning production areas and equipment where hygiene is important. It is a concentrated product developed for the food and health sector. It ensures the hygiene of the surfaces, the walls of the floors and the outer surfaces of tools and equipment made of sensitive metals in food production areas.

INSTRUCTIONS FOR USE: It is applied on all cleaned surfaces. The usage rate is 1/100.

EDCO 520 ALCOHOL BASED HAND HYGIENE

It is a ready-to-use alcohol-based hand hygiene in medical areas, industrial food and workplaces where hand hygiene becomes important. It has been proven in clinical trials that it has a wide range of action against bacteria, viruses and micro-organisms with its hygienic effect. In addition to its reliable hygiene effect, it contains moisturizers that protect the hands.

It is volatile and leaves no odor. It is suitable for frequent intensive use.

INSTRUCTIONS FOR USE: The product is used directly without dilution.

GC-1 PLUS CONCENTRATED LIME REMOVER, BATH, WC CLEANER

It is a concentrated liquid that provides cleaning and disinfection at the same time on sinks, tiles and all other hard surfaces. Besides disinfection, the product has a good cleaning feature. Since the product does not contain aldehydes and phenols, it is environmentally friendly and naturally soluble. It leaves a pleasant smell on the surfaces where it is applied with its unique smell.

INSTRUCTIONS FOR USE: It is diluted 1/5 to 1/40 according to the condition of the pollution. The surface to be used is wetted and applied to the surface. A light scrubbing action is required. On dense dirt and rusty surfaces, it is poured directly onto the surface and cleaned by rubbing with a suitable brush. Rinsing is required.

FX-BL-06 HYGIENIC ALCOHOL BASED SURFACE CLEANER

It is an alcohol-based surface cleaner that provides fast hygiene after cleaning, especially in the food industry, where hygiene is important, on all high-risk tool and equipment surfaces, work areas, closed areas and filling lines. It can also be used in the hygiene of water dispensers. It is volatile, does not leave odor in food, does not spoil its taste. It can decompose over 80% in nature.

INSTRUCTIONS FOR USE: After the residual residues on the surface to be hygienically cleaned are cleaned and removed from the environment, it is sprayed manually with a sprayer and left on the surface for 1-3 minutes. Then it should be wiped with a sterile clean cloth, applied to the surface again and left until production begins.



GC-CONC20 CONCENTRATE, FRAGRANT, ALCOHOL-BASED CLEANING PRODUCT GENERAL CLEANING SUBSTANCE WITH HYGIENIC EFFECT

It is a concentrated liquid that provides cleaning and disinfection at the same time in hospitals, clinics, food production centers, accommodation places requiring hygiene and in the surface equipment of building maintenance workplaces.

FEATURES:

- It cleans and deodorizes by killing bacteria, viruses and micro-organisms with its disinfectant effect.
- It is effective against germs, dirt, oil, etc., which are/will occur afterwards on all washable and wipeable hard/sensitive surfaces such as tiles, marbles, ceramics, marble, bathtubs, sinks, kitchen countertops, wooden surfaces, PVC surfaces. Does not scratch or dull surfaces. It makes the environment hygienic.
- It is also used for cleaning and maintenance of polished surfaces.
- It does not contain acid and alkali substances. Since it contains active substances obtained from natural substances, it is environmentally friendly and dissolves in nature by itself.

APPLICATION INFORMATION:

- It can be diluted 1/10-1/60.
- For general cleaning, 1 - 2 glasses of water are added to 10 liters of water. The prepared solution is applied to the surface with a wet mop or tassel mop.
- In heavy pollution, it is diluted 1/5 or the product is poured directly onto the surface, wiped clean with a clean cloth and rinsed.

RECOMMENDATION:

- It is recommended to use wet mop tassel in double bucket squeezing press floor trolley.
- Rinsing is required on surfaces in direct contact with food. WARNINGS
- Keep away from children.
- Read the instructions for use.
- Do not use for cleaning hands, face, body and foodstuffs.
- In case of contact with eyes, wash with plenty of water.

GC-42 CONCENTRATED GENERAL SURFACE CLEANER

It is used for cleaning all kinds of surfaces and floors that are not affected by water in general cleaning of homes and workplaces. It can be used easily on surfaces where scouring agents are inconvenient. It is suitable for environmental health. It decomposes over 80% in nature.

INSTRUCTIONS FOR USE: It is diluted 1/30 to 1/50 in daily cleaning. The prepared solution is applied to the surface with a wet mop or tassel mop. On stubborn, heavily soiled surfaces, the product is poured directly onto the surface, rubbed with a clean cloth, cleaned, and rinsed with water.

D-22 CLEANING AND CARE AGENT FOR WOODEN SURFACES

It can be used safely on all kinds of wooden surfaces. It leaves a lasting pleasant scent with its special perfume. Do not use on surfaces in direct contact with food.

INSTRUCTIONS FOR USE: It is used by diluting 1/20 to 1/80. It is used by adding a glass of water to a bucket of warm water. No need to rinse.



GC-32 CONCENTRATED HEAVY WORKER SOAP

It is used for daily use in workplaces and for cleaning heavily soiled and oily hands. It removes grease, ink and unwanted oily dense dirt without damaging the skin. Since it contains antiseptic substance, it provides hygiene while washing hands. Since it contains moisturizer and glycerin, it does not irritate, dry the skin and keeps it soft. It does not contain aldehydes and derivatives.

INSTRUCTIONS FOR USE: The product can be used by diluting 'A' with 1/6 of water. Put the product in a mixing bowl without foaming and add the water slowly. The dispenser is used with a liquid soap apparatus or by pouring directly into the hand. A slight slippery feeling will remain on the hand, which does not indicate that it has not been thoroughly rinsed.



SECRET GLOVE HAND CLEANING CREAM WITH MINERAL

Contains natural oils and lanolin care oil. Highly effective hand cream for stubborn, painted and sticky dirt. It acts as a hidden glove. Provides long-term protection while deeply cleansing the skin. It contains soft, rubbing minerals that strengthen the cleaning effect. The pH value is 7.0-7.5.

INSTRUCTIONS FOR USE: Without getting the hands wet, rub with 3 gr Secret Glove until the dirt dissolves. Then it is rinsed with water or wiped with the help of a cloth.

ECS POLISH CRYSTALIZED HARD FLOOR POLISH

ECS is the crystallization polish of natural and artificial floors such as marble, mosaic, tile and travertine. ECS compacts surfaces and hardens the ground. Increases resistance to abrasion, contamination and scratching. It provides an excellent shine. It reduces maintenance costs and is not affected by water and weather conditions. All oil, dirt and old polish layer should be removed from the surface with EWR dirt polish remover. ECS, crystallized lacquer pet carrier, steel wool, felt and spray unit mounted, weighs a minimum of 40 Kg and is 150 - 200 rpm. It is applied with a high-capacity polishing machine. The product is sprayed evenly on an area of k m2 and the machine is moved on the surface with circular movements until the surface shines.

POLYMER POLISH

It is formulated for polishing all kinds of PVC, natural stone floors, marble plastic and other artificial floors. It gives extra shine and is long lasting. It is an ideal floor polish for areas with heavy human traffic.

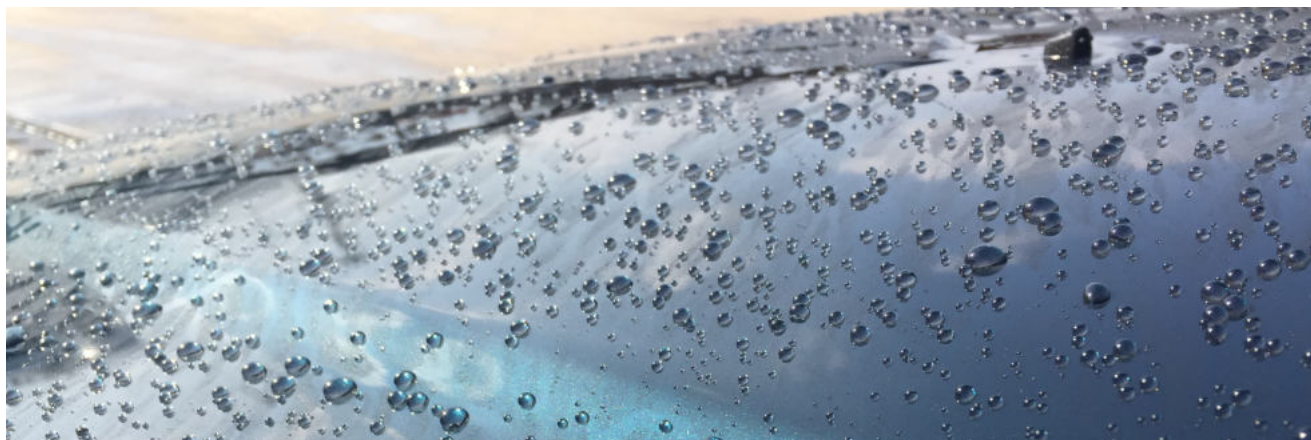
INSTRUCTIONS FOR USE: The product is distributed on the surface to be used by sprinkling.

EWS DIRT POLISH REMOVER

EWS is a special product that allows removing the polish on worn and desired surfaces where on marble, tile, granite, pvc, flooring etc and cleaning the stubborn dirt, rust, and oil settled on the floor. It ensures that the surface reaches the necessary cleanliness for re-polishing, and prepares it for the new polish. It is an alkaline product and can be used on all hard floors except wood. It is suitable for environmental health. It decomposes over 80% in nature.

INSTRUCTIONS FOR USE: It can be diluted 1/10-1/40 according to the intensity of the pollution. 3-5 water glasses of product solution is prepared in the water tank of the floor polishing and cleaning machines or in the double bucket squeezing press floor trolley for 10 liters of water, depending on the pollution situation. The surface to be cleaned; The polishing machine with a black/brown wash pad attached to the bottom circulates by rubbing the surfaces according to the pollution level. The polluted water that comes out is drawn with a vacuum machine. If there is no polishing machine, the solution prepared by drawing eight movements with a wet mop in the double bucket press floor car is applied to the dirty surface. Then rinsing with water is done.





DUST REPELLENT WATER REPELLENT GLASS AND GLOSSY SURFACE CLEANER

It provides perfect cleaning and shine on all glossy and glass surfaces. It ensures that dust does not come on the vehicles for 3-5 days, especially when applied to clean vehicles in automobile showrooms. Since it is a liquid, it does not scratch the surfaces, does not leave marks and stains, does not dull, dries immediately. By the alcohol it contains, it creates a film layer, making the surface shiny and does not require rinsing.

INSTRUCTIONS FOR USE: It is sprayed on the surface to be cleaned from a distance of 25-30 cm and holding it vertically in the spray position. Wipe the surfaces without rinsing with a clean, dry and lint-free cloth.

FX-EP-22 DRY FOAM LIQUID SOAP

Softens and moisturizes the skin. It has a pleasant and lasting perfume. It is easy to rinse.

INSTRUCTIONS FOR USE: It is used directly in the foam soap dispenser..



EC-35 PLACES OF USE OF PEARL LIQUID SOAP

It is used to clean the hands of personnel and customers in workplaces, hospitals, clinics, restaurants, hotels, food industry and industrial kitchens.

INSTRUCTIONS FOR USE: It provides hygienic cleaning in the hand. It does not irritate the hands as contains moisturizers in it and the PH suitable for the skin. By its special perfume, it also deodorizes the hands. It is suitable for environmental health; It decomposes over 90% in nature.

GC-62 LIQUID SOAP

It is used to clean the hands of personnel and customers in places such as food industry, industrial kitchen, workplace, hospital, hotel, restaurant. It does not irritate the hands thanks to the moisturizers it contains and the PH suitable for the skin.

INSTRUCTIONS FOR USE: It is used in the dispenser liquid soap apparatus or by pouring directly into the hand..

GC-11 INTENSIVE BLEACH

It is fast and effective. It is general purpose. It provides hygiene by the active chlorine it contains. It is a special chlorine bleach, suppression and stain removal product for industrial laundry applications. It can also be used in dishwashers and for removing protein and starch stains from dishes by dipping method.

INSTRUCTIONS FOR USE: It is dosed in the prewash or main wash sections. It can be applied according to the washing programs prepared for your business.

FX-EPD-14 COLORLESS ODORLESS LIQUID SOAP WITH HYGIENIC EFFECT

It is used for hygienic cleaning of the hands of personnel and customers in places such as food industry, industrial kitchen, workplace, hospital, hotel, restaurant. It is effective against gram positive and gram negative bacteria. It does not irritate the hands thanks to the moisturizers it contains and the PH suitable for the skin.



DW-2 LIQUID DETERGENT FOR INDUSTRIAL DISHWASHERS

It dissolves heavy frozen oil and dry food residues with its high alkaline structure and nonionic active substances. It not only provides perfect cleaning of the dishes, but also has a disinfecting effect. It can be used in all kinds of water hardness. It removes bad odors that may occur in the machine. It is suitable for environmental health. More than 80% degradable in nature.

INSTRUCTIONS FOR USE: It is used with dosing pumps connected to industrial dishwashers. With the adjusted dosing pump, 3-4 ml is dosed into 1L of washing water..

DW-R2 POLISHER FOR INDUSTRIAL DISHWASHERS

It provides spotless and fast drying of the washed dishes. It neutralizes the deposits of the washed detergent on the dishes and ensures that it is hygienic. It prevents limescale accumulation in the machine and removes heavy odors. It is suitable for environmental health. It decomposes over 80% in nature.

INSTRUCTIONS FOR USE: It is used with dosing pumps connected to industrial dishwashers and washing detergent. With a regulated dosing pump, 1.5-2 ml is dosed into 1 L of rinsing water.

DWL-2 LIME REMOVER FOR INDUSTRIAL DISHWASHERS

It is especially used to remove limescale formed in industrial dishwashers of institutions such as hospitals, factories, restaurants, hotels. When used regularly, it removes the lime layers that may occur in the machine and does not damage the metal parts. It is suitable for environmental health, it is easily decomposed in nature.

INSTRUCTIONS FOR USE: 20-30 gr is added to 1 liter of water manually in the dishwasher. In very calcareous cases, the amount can be increased. Rinse and detergent hoses are closed and an empty wash will be done for 20 minutes.

HD-PRO HAND WASHING PRODUCT

The high amount of surfactants it contains is biodegradable. Thanks to the glycerin moisturizing effect and adjusted pH, it does not irritate the hands and gives softness. It leaves a pleasant smell during cleaning and removes food odors. By its stable foam, it washes more and is easily rinsed.

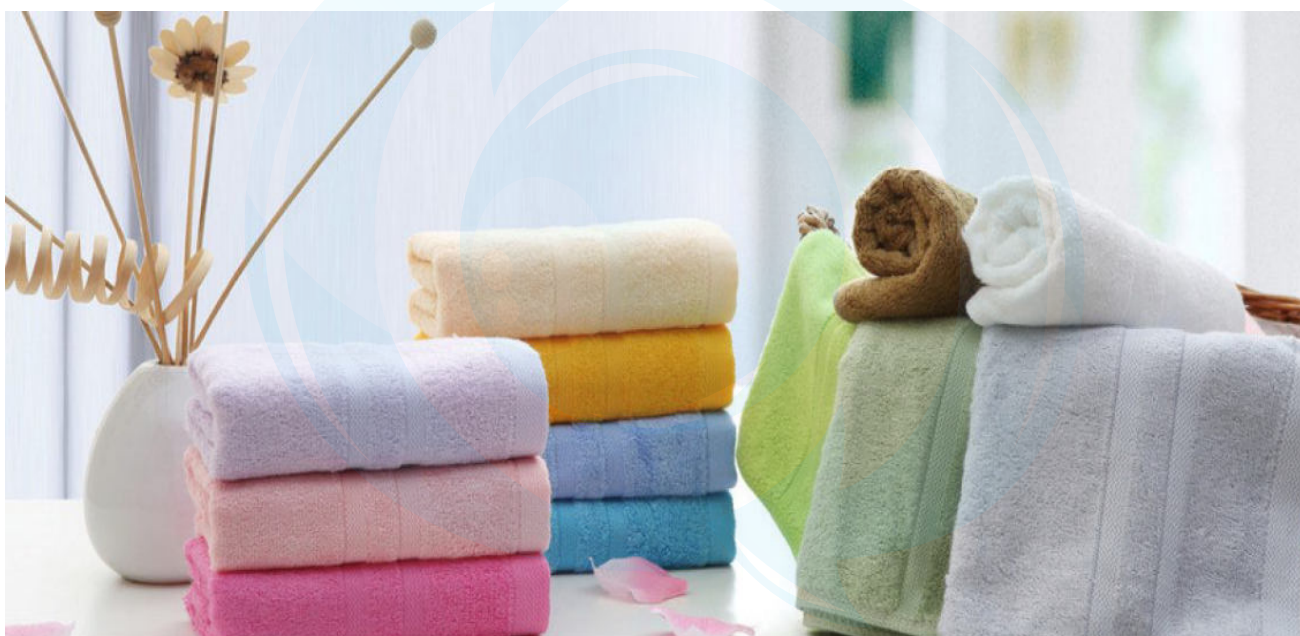


EPW FRONT DIP PRODUCT FOR DISHWASHERS

It is especially difficult to remove dried tea, coffee and starch residues from plates and glasses by washing them in the dishwasher. PW is used to remove the remaining residues by pre-dip method. Suitable for materials made of porcelain, glass, stainless steel and plastic. PW is a powerful softener developed for easier and more effective washing of dishes in the kitchens of hotels and restaurants. It softens the residues and dried stains on the dishes (forks, knives, spoons, plates, etc.) before machine or hand washing, making the washing process easier and faster. It saves time in a busy business environment and provides economy due to the use of less dishwashing liquid.

USAGE: Put 400-800 ML of PW in 10 liters of water into the pre-immersion chamber and leave the dishes in the chamber and wait for the dirt to soften. Then rinse with water and wash in the dishwasher or by hand. If hot water is used in this solution, the waiting time will be less.

ATTENTION: Use gloves during use as it is a strong degreaser and cleaner.



GC- SOFT FABRIC SOFTENER

It provides a natural softness to the laundry, facilitates ironing, and prevents static electricity. With its special perfume, it leaves a pleasant smell on the laundry.

INSTRUCTIONS FOR USE: In a 20 kg washing machine, 100-125 ml of fabric softener is added during rinsing.

GFC- CONCENTRATED LAUNDRY PERFUME

It is a special perfumed laundry perfume that leaves a lasting floral scent. It is a concentrated product. It is an economical product with easy use. It is a natural product that does not contain propellant gas and is suitable for human and environmental health.

APPLICATION INFORMATION

- The product is poured into the spray apparatus and deodorized by spraying on the laundry.

CHEMICAL STRUCTURE

- Special perfume, emulsifier, alcohol, deionized water

STORAGE CONDITIONS

It should be stored in a cool environment. It should not be stacked more than two bins and 5 boxes on top of each other.

WARNINGS

Read the operating instructions. In case of splashes on face and eyes, wash with plenty of water. Keep away from children. Do not spray on naked flames.



NON-TRACE-23 ANTISTATIC FLOOR CLEANER

It can be used on all kinds of hard surfaces, leaving no residue. It delays pollution.

INSTRUCTIONS FOR USE: The solution mixed with 10-20 layers of water is applied to the surface by spray or brush. After waiting for 15-20 minutes, it is rinsed with clean water. Cleaning with a 5% solution to be prepared does not require rinsing and thus creates a protective antistatic film layer on hard surfaces. This layer delays dust accumulation.

GC-AB-24 ALCOHOL-BASED FLAVORED AUTOMATIC CHEMICAL

It is used for cleaning all surfaces in workplaces (hospital, school, industrial kitchen, production facility, etc.) with vending machines. By its special foam cutter, its foam is controlled. It does not scratch or dull the floor by giving shine. It is suitable for environmental health. It decomposes over 80% in nature.

INSTRUCTIONS FOR USE: It is used by diluting 1/20 to 1/100 according to the capacity of the vending machine chamber.

FX-EX-9 STAINLESS SURFACE POLISH

Does not contain silicone. It nourishes the used surface. Usage amount is very low. It prevents fingerprints and water spots.

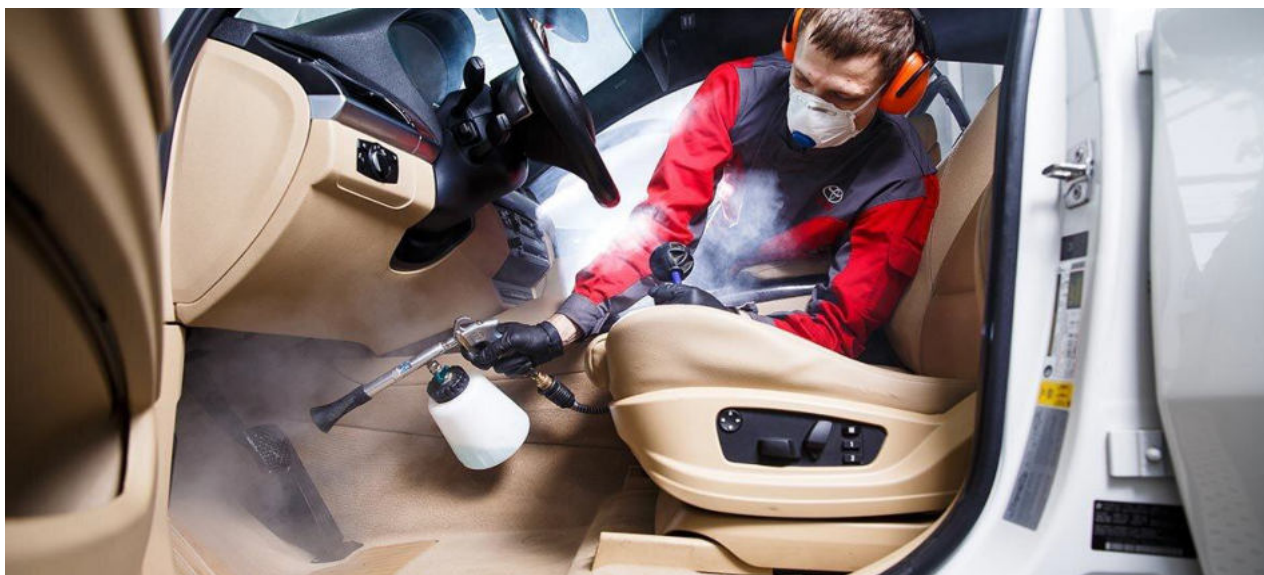
INSTRUCTIONS FOR USE: The surface to be applied must be clean and dry. Spread a very thin layer of FX-EX-9 on the surface with a dry lint-free cloth and wipe thoroughly until it dries.

FX-EX-8 STAINLESS CLEANER AND POLISHER

It prevents fingerprints and water spots. Stainless steel, brass etc. Cleans and protects metal surfaces. Does not contain silicone. It removes corrosion from the surface, cleans, polishes, feeds it with minerals and prevents dirt from forming again.

INSTRUCTIONS FOR USE: A very thin layer of product is spread on the surface with a dry lint-free cloth, fed and wiped by rubbing until it dries. After the application, it is rinsed with water or wiped with a damp cloth and dried. Shake before use.





AUTO CARE and MARINE GROUP

CAR-40 DETAILED VEHICLE INTERIOR CLEANER AND PROTECTIVE

It is used in all glove box, plastic bumper, roof, door panels, interior and exterior plastic accessories. Thanks to its special formulation, it leaves a permanent cleaning and shine on vehicles.

INSTRUCTIONS FOR USE: It can be used with 1 to 5 dilution or pure, depending on the desired cleaning effect.

MRN 07 POLISHED BOAT SHAMPOO

PROPERTIES: Removes traces of diesel oil, grease, soot, soot, bird stains, flies and insects. It is polished, it gives a natural shine to the applied surface and protects it. It does not harm the environment and the sea thanks to its formula that dissolves in nature. Easy to rinse, leaving no stains and marks. Ph is a neutral product. It has been tested and approved to be 100% biodegradable using OECD 301, 302A, 303A, 314 analysis methods.

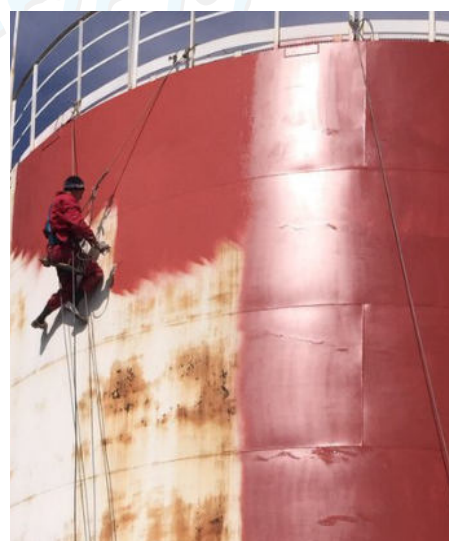
INSTRUCTIONS FOR USE: Depending on the product pollution 10 lt. It is used by diluting 100-150 ml into water. It is applied with a cloth, sponge or brush on the surface to be cleaned and rinsed with fresh water after the cleaning process.



MRN 06 RUST CONVERTER

Chemical converter of Iron Oxide (rust) to primer. Rust forms in layers and must be removed before many operations. Sanding, scouring, scraping may not completely remove the rust and may cause corrosion under the new paint layer. It takes control and neutralizes at once. The newly formed rust is a protective armor. It prolongs their life by protecting the precious evening. Stops an old pass in one move. There is no need for processes such as pickling, scraping, grinding, sandblasting, prevents new rust formation. Advanced formula neutralizes rust to form a protective layer and stop corrosion, easy to apply. You can easily apply it with a brush, roller or sprayer and clean it with soap and water, saving time and effort. Does not require mixing and surface treatment preparation. Prepares floors for painting. Creates a primer that will provide years of protection under the paint, does not contain solvents. It is a non-flammable, quite harmless, water-based emulsion.

AREAS OF USAGE: Industrial paints, shipbuilding areas, refineries, garages, workshops.







EDCO CHEM

EFFECTIVE AND RELIABLE
YOUR SOLUTION PARTNER

EDCO CHEMICAL TRADE LIMITED COMPANY

www.edcochem.com

☎ +90 232 218 00 58 ✉ info@edcochem.com

Center : Manas Blv. Folkart Towers A Kule No: 47/B K: 26 D: 2601 Bayraklı / İZMİR - TÜRKİYE

Factory : Egemenlik Mh. 6016/5 Sk. No. 13/1 Işıkkent

Bornova / İZMİR - TÜRKİYE